

# SOUND PROSPECTOR



## GENERAL

Type:	Jack-Up Barge (non self propelled)
Built	2007, rebuilt 2009
Class	Bureau Veritas I ✱ HULL ● MACH Offshore Self-Elevating Unit Coastal Area
Flag	Swedish
Dimensions O.A (draft):	31,85mtr x 20,0mtr x 2,98 mtr (4.50 mtr with spud cans mounted)
GRT:	620 MT
Lightship:	535 MT
Call sign:	SDKF
Port of registry:	Malmö

## JACK-UP SYSTEM

Jacking Speed:	15 m/hr for the whole barge
Main engines:	4 set Electric Hydraulic pumps, 75 kW/set
Leg Length:	50 m
Maximum jacking depth:	35 m on 0 m penetration
Maximum payload:	400 MT (evenly spread out)

## TANK CAPACITIES

Fuel oil:	12,7 m <sup>3</sup>
Dirty oil:	0,5 m <sup>3</sup>
Fresh Water:	40 m <sup>3</sup>
Sewage:	7 m <sup>3</sup>
Hydraulic oil:	3 m <sup>3</sup>

## AUXILIARY EQUIPMENT

Main generator sets:	2 set Powerpack VP D9,
Capacity	2 x 250 kVA/200 kW, 50Hz, 230/400V
Additional generator:	1 set Powerpack VP D5 77 kva
Hydraulic set:	1 x 50 kW electrical motor pump

## DECK

Crane:	1 x HS Marine AK99HE3 SWL 5 MT on the winch
Clear Deck Space:	370 m2 (without optional accommodation)

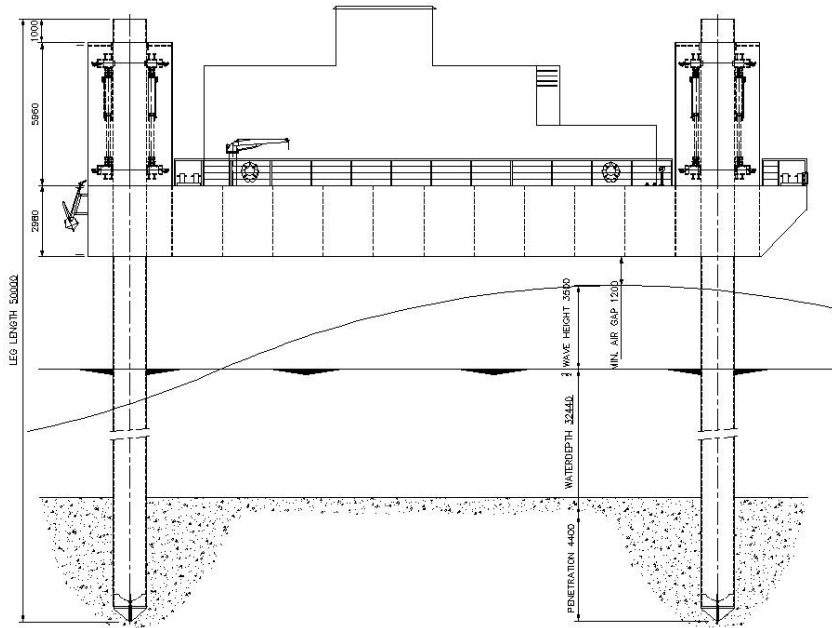
## ACCOMMODATION

Fixed accommodation – 2 x 1 person cabins, kitchen and messroom, small workshop and storages.  
Optional accommodation – 9 x 2 person cabins. Access to changing rooms, showers, toilets, and a fully equipped laundry room.  
Onboard are life saving equipment for a total of 25 persons (incl. crew)

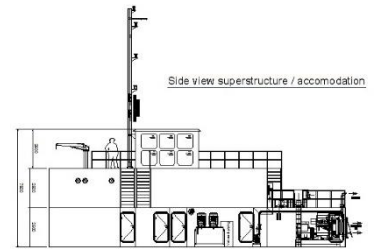
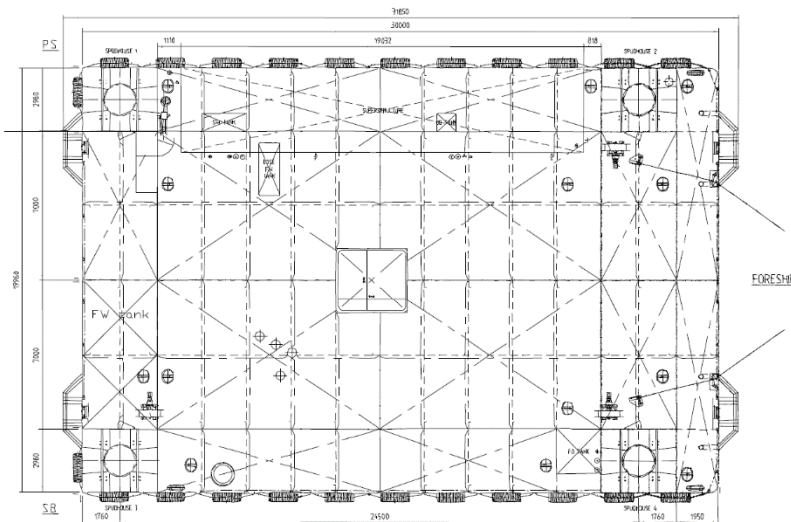
## NAVIGATION EQUIPMENT

Magnetic compass	1 x Reflecta/1/Fiberline
Satellite compass:	1 x Furuno type SC-50
RADAR:	1 x Furuno type FR=1505 mkl 1
GPS:	1 x Furuno type GP-90
AIS:	1 x Simrad A180
Echosounder:	1 x Furuno type FE-700
VHF/DSC:	2 x Type Sailor RT 4822 DSC 1 x Sailor 6210 DSC
SSB/DSC:	SP – radio type 6210 DSC
Navtex:	1 x Furuno type NX-700
Search light	Seematz 1 x 1000W

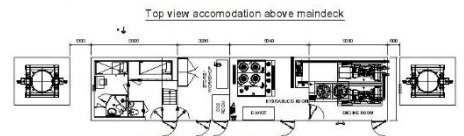
# SOUND PROSPECTOR



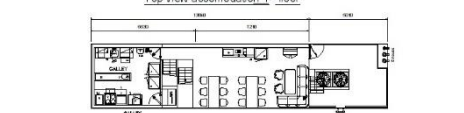
**SIDE VIEW**



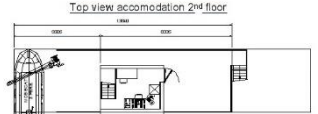
Side view superstructure / accommodation



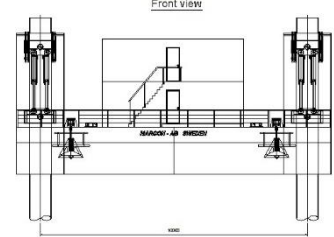
Top view accommodation above maindeck



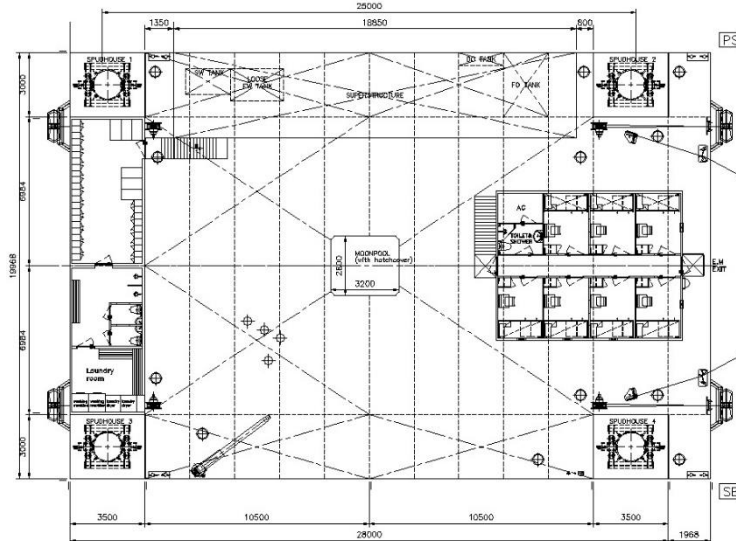
Top view accommodation 1st floor



Top view accommodation 2nd floor



Front view



**MAINDECK**