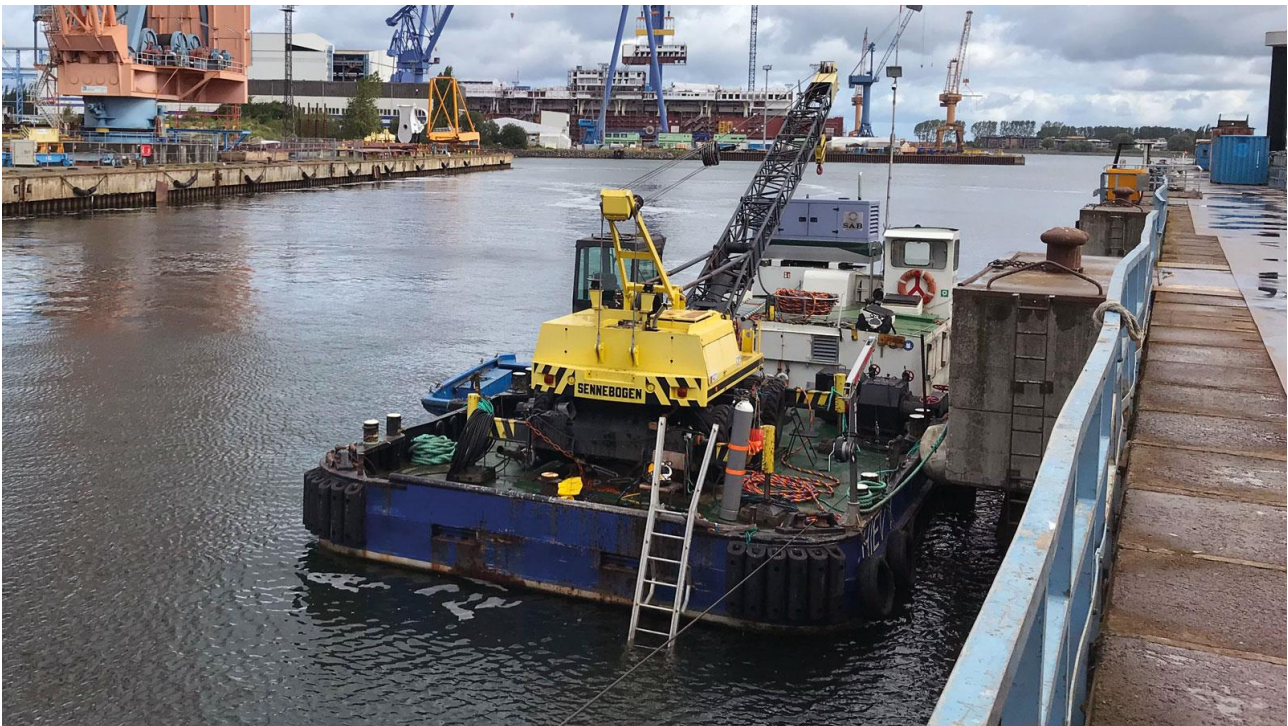


# MS HIEV I

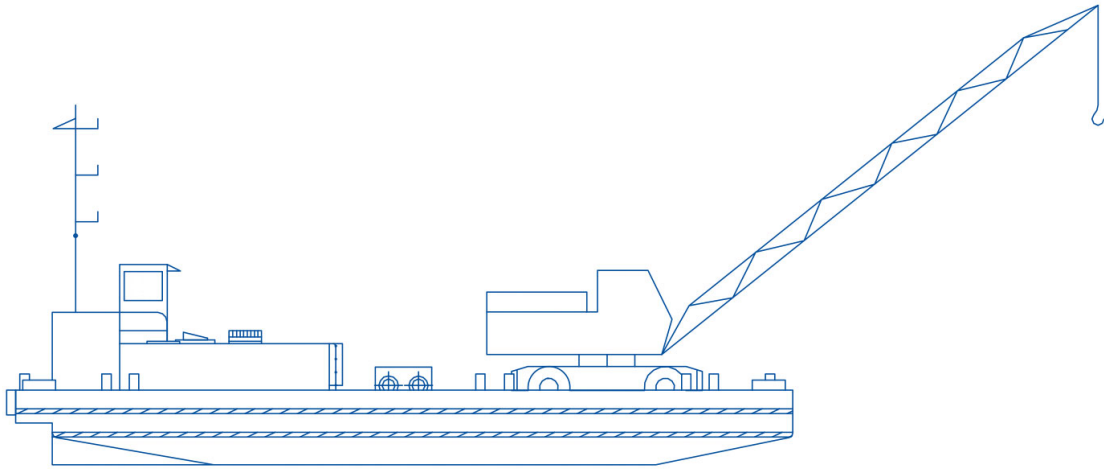


## GENERAL

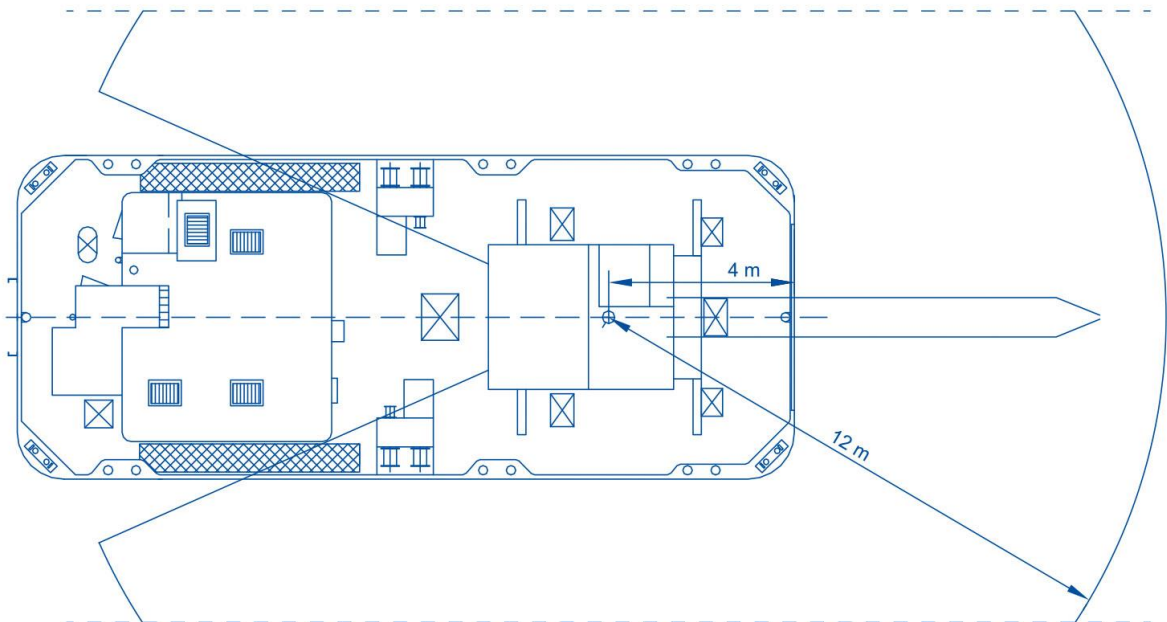
Type:	Crane/ diving barge
Built	1964
Class	SUK, BG Verkehr
Flag	Germany
Dimensions O.A (draft):	16,77mtr x 7,22mtr x 0,80mtr
GRT:	31 MT
ENI number:	04801840
Call sign:	n/a
Port of registry:	Rostock
<b>PERFORMANCE</b>	
Speed free running:	no self-propulsion
Bollard pull:	n/a
<b>TANK CAPACITIES</b>	
Fuel oil:	2,0 m <sup>3</sup>
Fresh Water:	n/a
<b>AUXILIARY EQUIPMENT</b>	
Main generator sets:	60 kVA
<b>Pump</b>	Lowara SHS 65-200/185, 18.5 kW, max. 6 bar, max. 120 m <sup>3</sup> /h
<b>PROPULSION</b>	
Propellers:	no self-propulsion
Total power:	158 kW
Main engines:	Deutz F8M 716

## DECK

Crane:	<ul style="list-style-type: none"> <li>Sennebogen S 612, Boom length 12 m, Lifting capacity max. 5 t; 3 t at 6 m outreach</li> <li>MOB david</li> </ul>
Mooring / Anchorage:	4-Point mooring with 4 winches, 70 m wire each attached to fix points at pier or using 1,5 t anchor weights
Clear deck space:	75 m <sup>2</sup> (20 m <sup>2</sup> used for crane)
Pump	Lowara SHS 65-200/185, 18.5 kW, max. 6 bar, max. 120 m <sup>3</sup> /h
<b>NAVIGATION EQUIPMENT</b>	
Communication	portable VHF radio
Nautical	n/a
<b>DIVE EQUIPMENT</b>	
Dive control unit	dive control panel, video and communication system for two diver, public address system, deck cameras
Helmets	2 x Kirby Morgan 27 + 2 x 80 m umbilical
Compressor	LW 280 ES, 280 l/min, max. 350 bar
Further dive equipment	diving ladder, high pressure bottles 5 x 50l 200bar
<b>ACCOMMODATION</b>	
Office/mess room, WC.	



## SIDE VIEW



## MAINDECK