

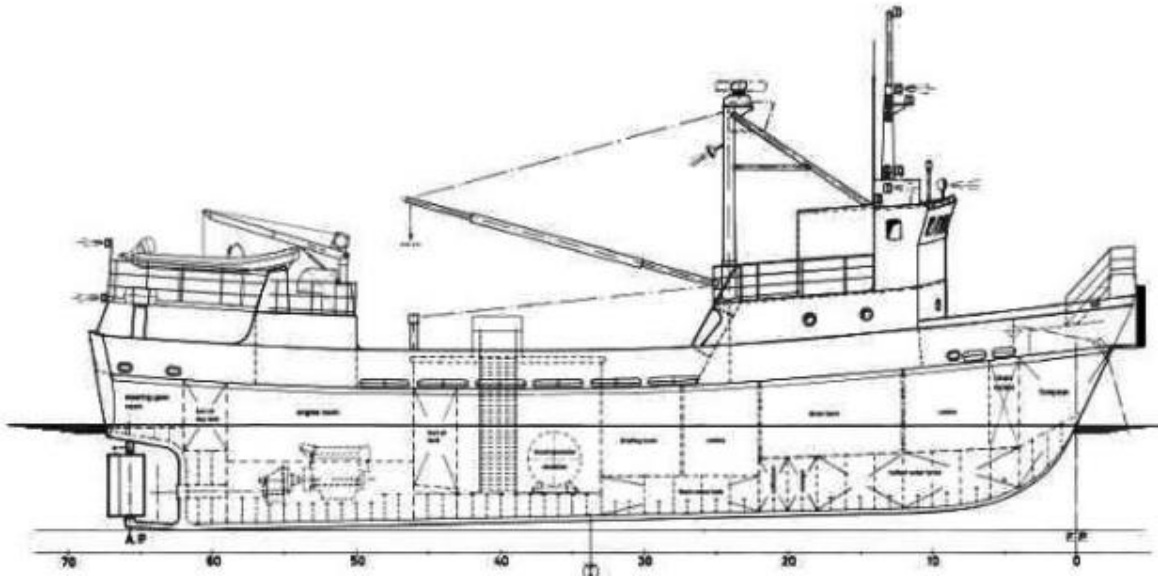
# MS BALTIC TAUCHER II



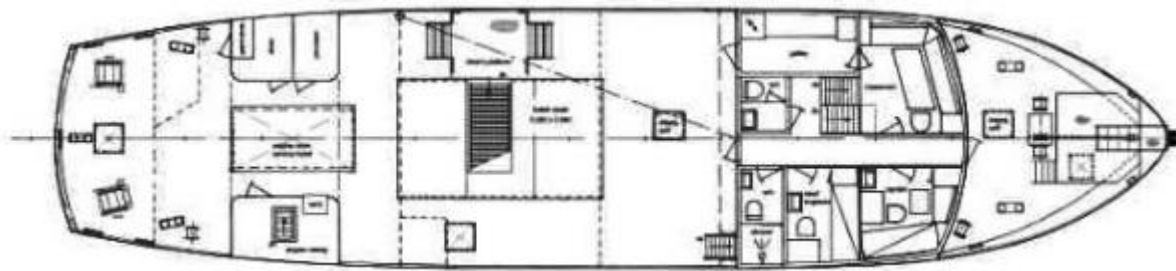
<b>GENERAL</b>	
Type:	Multi purpose-/ research- / diving vessel
Built	1978
Class	RINA
Flag	Germany
Dimensions O.A (draft):	29,00mtr x 6,70mtr x 2,80mtr
GRT:	146 MT
IMO number:	9096387
Call sign:	DECT2
Port of registry:	Rostock
<b>PERFORMANCE</b>	
Speed free running:	11 knots
Service speed:	8 knots
<b>TANK CAPACITIES</b>	
Fuel oil:	10,5 m <sup>3</sup>
Fresh Water:	10 m <sup>3</sup>
<b>AUXILIARY EQUIPMENT</b>	
Main generator sets:	2 x 62 kW
<b>PROPULSION</b>	
Propellers:	Controllable pitch propeller
Total power:	404 kW
Main engines:	Volvo Penta D16MH
Bow thruster:	n/a
<b>DECK</b>	
Crane:	Derrick, SWL 4 mt at 8 m MOB davit, SWL 0,9 mt MOB davit, SWL 0,225 mt
AH/Towing winch:	n/a
Tugger winch:	n/a
Deck carrying capacity:	n/a
Clear deck space:	80m2 approx.
Daughter craft	RIB "Bombard" 6 m, 100 hp
Anchorage	4-point-mooring, 2 x 250 kg (aft) + 2 x 350 kg (fwd) delta flipper anchors, 400 m wire each

<b>NAVIGATION EQUIPMENT</b>	
Communication	GMDSS, portable VHF/UHF radio, satellite - voice and data, GSM - voice and data, internet
Nautical	AIS, radar - ARPA, ECDIS/ECS, DGPS, autopilot, echo sounder Positioning system, VHF D-finder
<b>ACCOMMODATION</b>	
Crew:	4 (2 x 1; 1 x 2)
Passenger:	10 (3 x 2; 1 x 4)
Office:	yes
<b>Dive Equipment</b>	
Deck decompression chamber	LOA: 3500 mm Diameter: 1600 mm Type: Twin lock Working pressure: 5,0 bar Classification: Lloyd's Register
Dive control unit	Dive panel, two way communication and video system for three divers, deck camera unit, hard wire and radio communication to deck and bridge
Dive equipment	Dive helmets: 3x Kirby Morgan 27 HP bottles: 9 x 50 L 200 bar Compressor: 280 l/min + back-up O2 analysers: Hytech

# MS BALTIC TAUCHER II



SIDE VIEW



MAINDECK



BELOW MAINDECK