

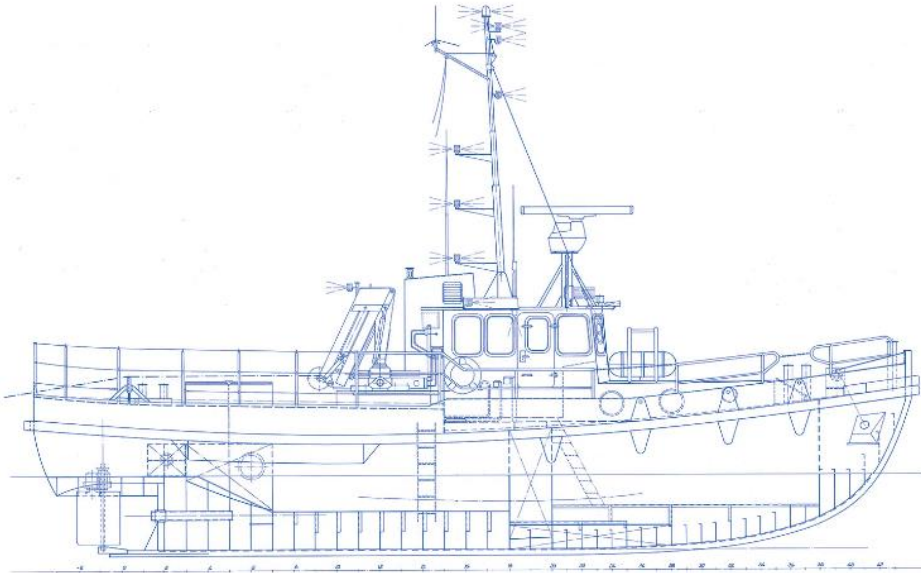
# MS BALTIC TAUCHER I



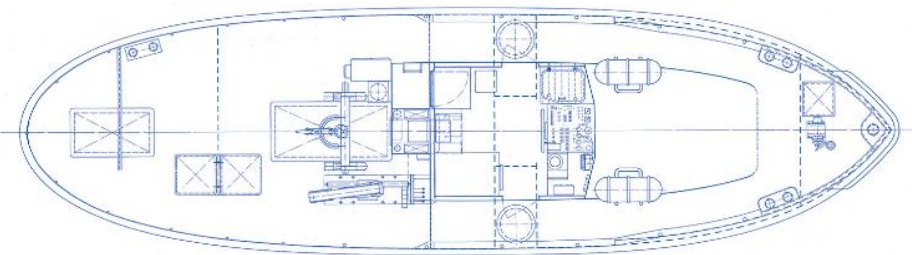
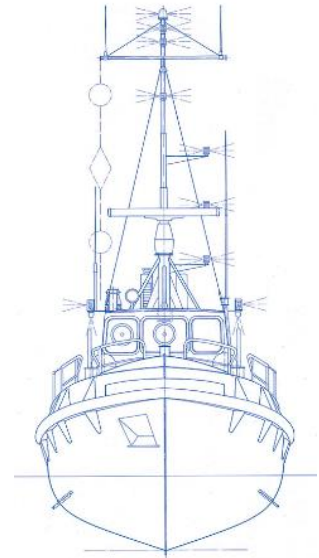
<u>GENERAL</u>	
Type:	Push tug/ multi purpose-/ dive support vessel
Built	1967
Class	BG Verkehr
Flag	Germany
Dimensions O.A (draft):	16,51mtr x 4,62mtr x 1,9mtr (max.)
GRT:	31 MT
IMO number:	n/a
Call sign:	DCIM2
Port of registry:	Rostock
<u>PERFORMANCE</u>	
Speed free running:	8 knots
<u>TANK CAPACITIES</u>	
Fuel oil:	3,6 m <sup>3</sup>
Fresh Water:	1,0 m <sup>3</sup>
<u>AUXILIARY EQUIPMENT</u>	
Main generator sets:	n/a
Inverter	3 kW
<u>PROPULSION</u>	
Propellers:	Fixed propeller
Total power:	158 kW
Main engines:	Deutz F8M 716
Bow thruster:	n/a

<u>DECK</u>	
Crane:	out of service
AH/Towing winch:	n/a
Tugger winch:	n/a
Deck carrying capacity:	n/a
Clear deck space:	18m <sup>2</sup> approx.
<u>NAVIGATION AND COMMUNICATION</u>	
Communication	GMDSS A1, GSM voice and data, 2 x UHF radio, portable VHF/UHF radio
Nautical	AIS, radar - ARPA, DGPS, echo sounder, chart plotter
<u>ACCOMMODATION</u>	
Office/mess room, galley, WC.	

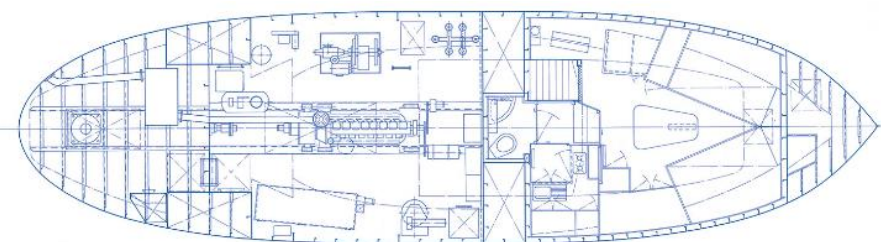
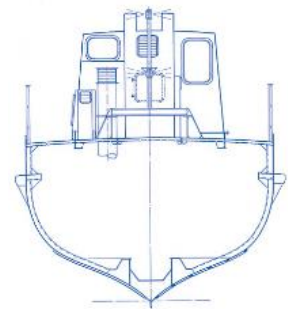
# MS BALTIC TAUCHER I



**SIDE VIEW**



**MAINDECK**



**BELOW MAINDECK**