

MS BALTIC LIFT

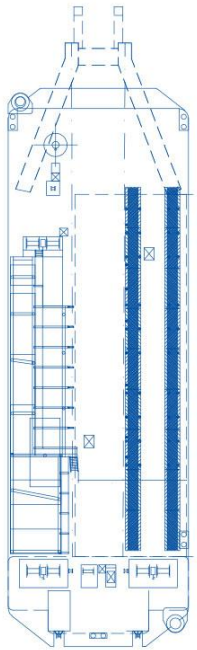


<u>GENERAL</u>	
Type:	Self-Propelled Crane Barge
Built	1974
Class	DNV-GL (100A5K MC)
Flag	Germany
Dimensions O.A (draft):	53,78mtr x 17,85mtr x 1,90-2,40mtr
GRT:	1.086 MT
IMO number:	8872796
Call sign:	DFQC
Port of registry:	Rostock
<u>PERFORMANCE</u>	
Speed free running:	6 knots
<u>TANK CAPACITIES</u>	
Fuel oil:	24 m ³
Fresh Water:	15 m ³
<u>AUXILIARY EQUIPMENT</u>	
Main generator sets:	2 x 580 kVA, 1x 75 kVA 380/220 V, 50 Hz
Pumps:	3 x 455 m ³ /h, 7 bar
Compressor	t140 m ³ /h, 8 bar, Atlas Copco
Work boats:	steel boat (7 m), Offshore RIB (6m, 100 hp)
Sewage plant	yes
<u>PROPULSION</u>	
Propellers:	2 x 360° Schottel Rudderpropeller
Total power:	2 x 321 kW
Main engines:	2 x Deutz SBF 12 M 716
Bow thruster:	1 x Cone Jet Schottel SKJ 142, 325 kW

<u>Main Crane</u>	
Lifting capacity A-Frame	max. 200 t, s. load diagram
Outreach	Max. 18 m
Top unit	Optional, max. 140 t
Outreach top unit	Max. 28 m
<u>Auxiliary Crane</u>	
Model	Liebherr HS 843
Boom length	up to 32 m in stock, extendable to max. 53 m
Lift capacity	e.g. 23 t at 6,5 m with 32 m boom, see table
<u>DECK</u>	
Winches:	1 x 20 t, 1 x 5 t
Deck carrying capacity:	Up to 10 t/m ²
Clear deck space:	565m ² approx
Anchorage system	Spud-legs 2 x 26 m
<u>NAVIGATION EQUIPMENT</u>	
Communication	GMDSS A1, UHF/VHF Radio, GSM /INMARSAT/SAT - Voice and Data, Internet
Nautical	AIS, ARPA Radar, ECS, RTK DGNSS, Echo Sounder, SAT-TV Raymarine, UKW Sailor 6000 + repeater
<u>ACCOMMODATION</u>	
Cabins:	14 (10 x 1 + 1 x 4)
Office:	yes

Technical drawings

Side view / M 1:200



Lifting capacity of auxiliary crane / Liebherr HS 843

Boom length	Lifting capacities in tonnes		Ballast: 12.3 t			Source: Liebherr	
	11 m	14 m	17 m	20 m	23 m	29 m	32 m
Outreach	t	t	t	t	t	t	t
3,5 m	60,0						
4,0 m	49,9	45,4					
4,5 m	47,3	43,8	38,6				
5,0 m	39,2	39,2	37,4	34,6			
5,5 m	33,4	33,4	33,4	33,3	31,1		
6,0 m	29,1	29,0	29,0	29,0	28,9	25,9	
6,5 m	25,7	25,7	25,6	25,6	25,5	25,2	23,5
7,0 m	23,0	23,0	22,9	22,9	22,8	22,6	22,6
7,5 m	20,8	20,8	20,7	20,7	20,6	20,4	20,4
8,0 m	19,0	19,0	18,9	18,8	18,7	18,6	18,6
9,0 m	16,1	16,1	16,0	15,9	15,8	15,6	15,7
10,0 m	13,9	13,9	13,8	13,8	13,6	13,5	13,5
11,0 m	12,2	12,2	12,1	12,0	12,0	11,8	11,8
12,0 m		10,9	10,8	10,7	10,6	10,4	10,4
13,0 m		9,8	9,7	9,6	9,5	9,3	9,3
14,0 m		8,8	8,7	8,7	8,6	8,4	8,4
15,0 m			8,0	7,9	7,8	7,6	7,6
16,0 m			7,3	7,2	7,1	6,9	6,9
17,0 m			6,7	6,6	6,5	6,3	6,3
18,0 m				6,1	6,0	5,8	5,8
19,0 m				5,7	5,6	5,4	5,4
20,0 m				5,3	5,2	5,0	5,0
22,0 m					4,5	4,3	4,3
24,0 m						3,7	3,7
26,0 m						3,2	3,3
28,0 m						2,9	2,9
30,0 m							2,5
32,0 m							2,2

Top view / main deck

